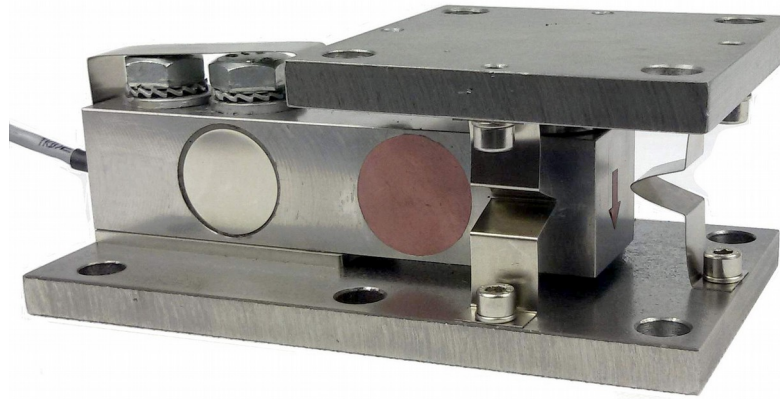


**SPRINGMOUNT® Weighing Module**

**BS-M25D**

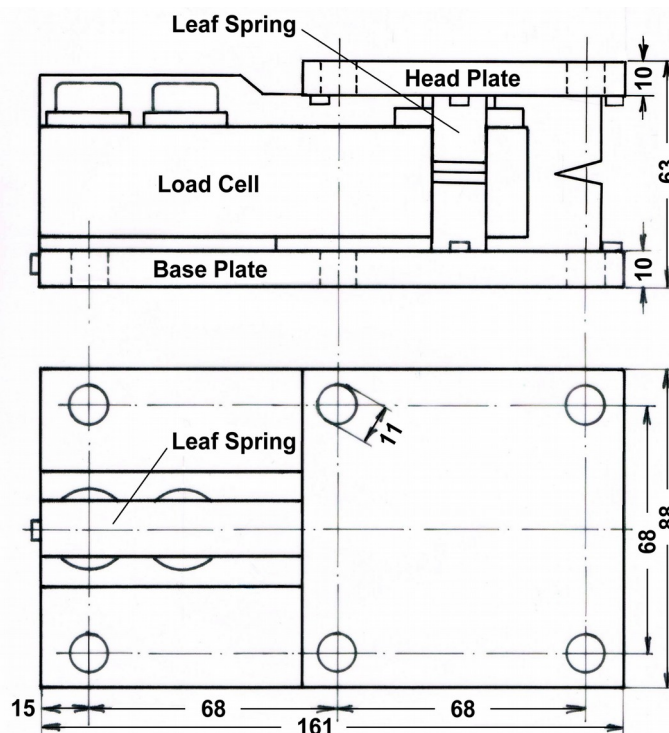
Capacities: 700, 1500 kg.



**Characteristics:**

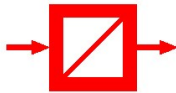
- Elastic Restraining using Leaf Springs (*SPRINGMOUNT®*-Technology)
- Optimised Force Transmission from Head Plate to Load Cell
- Load Cell made of Stainless Steel (17-4PH)
- Sensitivity 2 mV/V
- Accuracy Class 0.02%
- Environmental Protection IP 65

**Dimensions:**



Dimensions in mm.

Cable Diameter max. 5 mm, Cable Length 5 m (4-wire).



**SPRINGMOUNT® Weighing Module**

**BS-M25D**

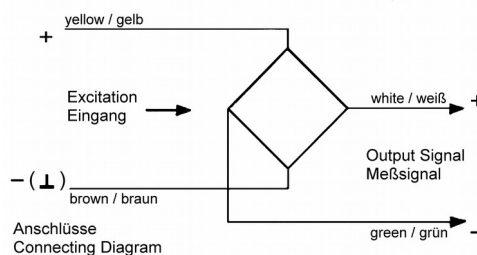
*Technical Specifications:*

Used Load Cell: BS25

Capacity	(E <sub>max</sub> )	[kg]	700, 1500.
Accuracy Class			0.02%
Maximum Number of Load Cell Intervals	(n <sub>LC</sub> )		3000
Minimum Load Cell Verification Interval	(V <sub>min</sub> )	[% of E <sub>max</sub> ]	0.01
Sensitivity	(C <sub>n</sub> )	[mV/V]	2.00 ± 0.02
Non-Linearity	(d <sub>lin</sub> )		≤ 0.02
Zero Balance		[% of C <sub>n</sub> ]	≤ 1
Temperature Effect on Zero Balance	(TC <sub>0</sub> )	[%C/10K]	≤ 0.02
Temperature Effect on Sensitivity	(TC <sub>C</sub> )	[%C/10K]	≤ 0.02
Minimum Dead Load		[% of E <sub>max</sub> ]	0
Safe Load Limit	(E <sub>lim</sub> )	[% of E <sub>max</sub> ]	150
Breaking Load	(E <sub>d</sub> )	[% of E <sub>max</sub> ]	300
Deflection at E <sub>max</sub>		[mm]	≤ 0.90
Creep (over 30 Minutes)		[% of C <sub>n</sub> ]	≤ 0.02
Zero Return after 30 Minutes		[% of C <sub>n</sub> ]	≤ 0.02
Excitation		[V]	5 ... 15
Input Resistance	(R <sub>LC</sub> )	[Ω]	410 ± 30
Output Resistance	(R <sub>OUT</sub> )	[Ω]	350 ± 5
Insulation Resistance		[MΩ]	> 3000 (at 100V DC)
Nominal Temperature Range		[°C]	-10 ... +40
Service Temperature Range		[°C]	-20 ... +65
Storage Temperature Range		[°C]	-40 ... +75
Material of Load Cell			Stainless Steel (17-4PH)
Material of Other Parts		either	Stainless Steel or Galvanised Steel
Protection Class to EN 60 529			IP65

*Cable/Connections:*

- 4-wire cable, 5 m long;
- Screened cable, screen not connected to load cell body;
- Cable diameter approx. 5 mm;
- End of wires stripped and tinned.



Excitation +	yellow
Excitation -	brown
Signal +	white
Signal -	green

*Optional Accessories:*



Load Cell Junction Box, Model AK,  
Stainless Steel Housing IP65



Load Cell Connection Cable,  
4-wire or 6-wire, screened

More Weighing Technology (e. g. load cells, weight indicators, weighing amplifiers) on [www.gbuettner.de](http://www.gbuettner.de).