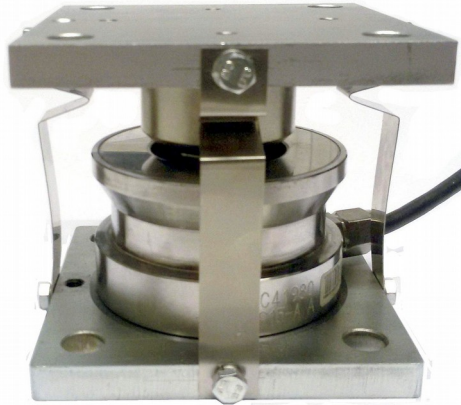


## SPRINGMOUNT® Weighing Module

## B-DJ-M8

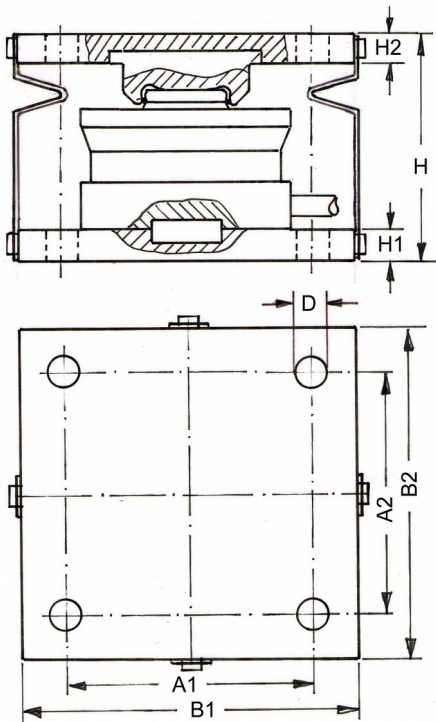
Capacities: 1, 2.2, 3.3, 4.7, 10, 15, 22, 33, 47 t.



### Characteristics:

- Elastic Restraining using Leaf Springs (*SPRINGMOUNT®*-Technology)
- Optimised Force Transmission from Head Plate to Load Cell
- Load Cell made of Stainless Steel (17-4PH)
- Sensitivity 2.85 mV/V
- Accuracy Class 0.02% (1-4,7t), C3 (10-47t)
- Environmental Protection IP 68

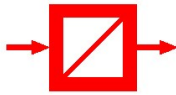
### Dimensions:



Capacity [t]	Dimensions [mm]				
	H	B1=B2	A1=A2	H1=H2	D
1/2.2/3.3/4.7	96	90	70	10	9.5
10 / 15 / 22	90	100	75	10	12
33	114	120	90	12	14
47	133	165	130	15	18

Dimensions in mm.

Cable Diameter max. 5 mm, Cable Length 8 m (1-4,7t) and 12 m (10-47t), 4-wire.



**SPRINGMOUNT® Weighing Module**

**B-DJ-M8**

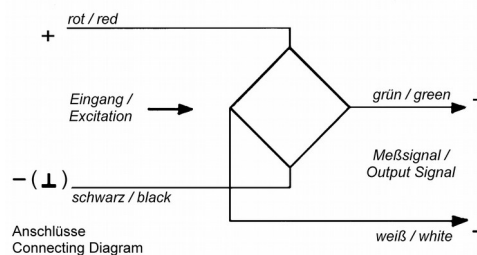
*Technical Specifications:*

Used Load Cell: B-DJ

Capacity	( $E_{max}$ )	[kg]	1, 2.2, 3.3, 4.7, 10, 15, 22, 33, 47.
Accuracy Class			0.02% C3 (OIML R60)
Maximum Number of Load Cell Intervals	( $n_{LC}$ )		3000
Minimum Load Cell Verification Interval	( $V_{min}$ )	[% of $E_{max}$ ]	0.01
Sensitivity	( $C_n$ )	[mV/V]	2.85 ± 0.02
Non-Linearity	( $d_{lin}$ )	[% of $C_n$ ]	≤ 0.02 ≤ 0.018
Zero Balance		[% of $C_n$ ]	≤ 1
Temperature Effect on Zero Balance	( $TC_0$ )	[%C/10K]	≤ 0.02
Temperature Effect on Sensitivity	( $TC_C$ )	[%C/10K]	≤ 0.02
Minimum Dead Load		[% of $E_{max}$ ]	0
Safe Load Limit	( $E_{lim}$ )	[% of $E_{max}$ ]	150
Breaking Load	( $E_d$ )	[% of $E_{max}$ ]	300
Deflection at $E_{max}$		[mm]	≤ 0.30
Creep (over 30 Minutes)		[% of $C_n$ ]	≤ 0.02 ≤ 0.017
Zero Return after 30 Minutes		[% of $C_n$ ]	≤ 0.02 ≤ 0.017
Excitation		[V]	5 ... 15
Input Resistance	( $R_{LC}$ )	[Ω]	1450 ± 50
Output Resistance	( $R_{OUT}$ )	[Ω]	1405 ± 5
Insulation Resistance		[MΩ]	> 5000 (at 50V DC)
Nominal Temperature Range		[°C]	-10 ... +40
Service Temperature Range		[°C]	-30 ... +70
Storage Temperature Range		[°C]	-40 ... +75
Material of Load Cell			Stainless Steel (17-4PH)
Material of Other Parts			either Stainless Steel or Galvanised Steel
Protection Class to EN 60 529			IP68

*Cable/Connections:*

- 4-wire cable, 8 m (1-4.7t) and 12 m (10-47t) long;
- Screened cable, screen not connected with load cell body;
- Cable diameter approx. 5 mm;
- End of wires stripped and tinned.



Excitation +	red
Excitation -	black
Signal +	green
Signal -	white

*Optional Accessories:*



Load Cell Junction Box, Model AK,  
Stainless Steel Housing IP65



Load Cell Connection Cable,  
4-wire or 6-wire, screened

More Weighing Technology (e .g. load cells, weight indicators, weighing amplifiers) on [www.gbuettner.de](http://www.gbuettner.de).