

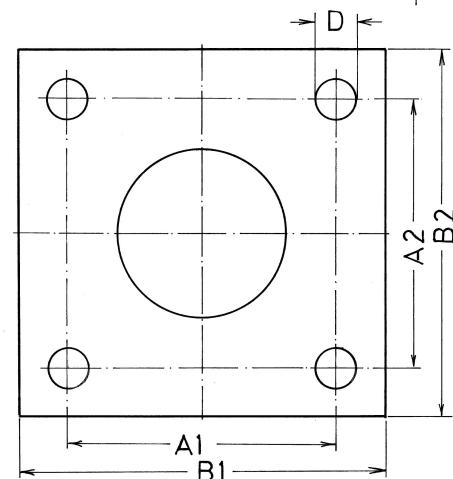
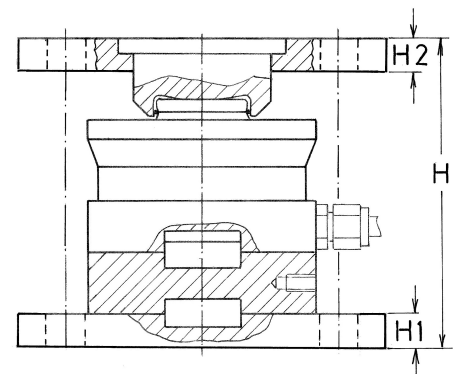
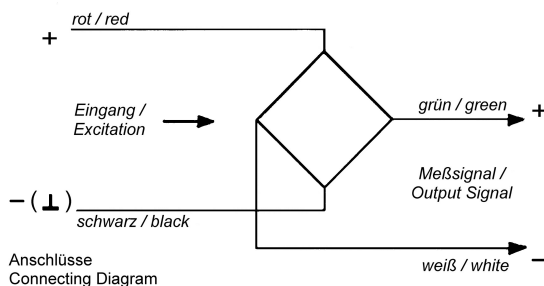


612-e

Weighing Module, Type B-DJ-M6

Load Cell with Mounting Parts

- For measuring force and weight (compression)
- Simple mounting, with mounting flanges, aligned mounting holes in Head Plate and Base Part
- **Ideal (mounting very advantageous) for silos and weigh bins**
- Compact design, Load Cell, Load Button and Base Plate (hardened & grinded) made of stainless steel other parts made of either stainless steel or galvanised steel
- High Protection (IP68), for rough environments
- Different capacities available
- Suitable for all common weighing electronics



DJ-M6 Capacity [t]	Dimensions [mm]							
	H	H1	H2	B1	B2	A1	A2	D
1/22/33/4.7	97	8	8	90	90	70	70	9
10 / 15 / 22	105	10	10	100	100	75	75	11
33	132	12	12	120	120	90	90	13
47	155	15	15	165	165	130	130	17
68	165	15	15	165	165	130	130	17
100	197	20	20	200	200	150	150	21.5
150	207	20	20	200	200	150	150	21.5
220	265	25	25	305	305	225	225	25.5

Cable lengths: 8m (1-4.7t); 12m (10-33t); 16m (47-220t)

Technical Specifications of the Load Cell:

Nominal Output at Capacity	2.85 ± 0.01mV/V
Non Linearity	< 0.03%
Creep (30min)	< 0.03%
Zero Output Tolerance	< 1%
Input Resistance	approx. 1450Ω
Output Resistance	1402Ω ± 3Ω
Insulation Resistance (50V)	5000MΩ
Environmental Protection	IP68

Temperature Effect per 10°C on:

- Nominal Output	< 0.03%
- Zero Output	< 0.03%
Compensated Temp. Range	-10 to +40°C
Operation Temp. Range	-30 to +70°C
Excitation	max. 15V
Safe Overload	150%
Mechanical Failure	200%